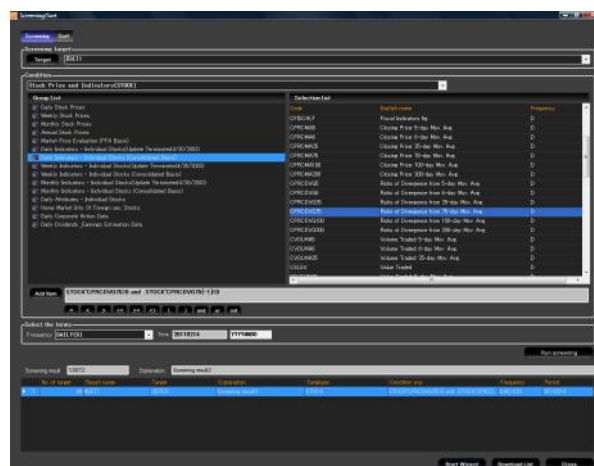


Technical Analysis Screening with Financial QUEST

Financial QUEST provides investors with the tools needed to make the right investment choices. With over 30 years of securities data available to download, as well as 40 years of corporate financial reports and macroeconomic industrial data, Financial QUEST is your quality, one stop source of Japanese corporate financial and economic data.

Using the Screening function in Financial QUEST, you can turn Financial QUEST into a powerful stock screener based on any criteria that can be applied to the data contained in Financial QUEST. In this tutorial, we will look at using the Screening Wizard in Financial QUEST to search for companies that have crossed their 25 day moving average and are above their 100 day moving average.



Stock Screening Example

In the following example, we will look at screening all listed companies where the stock price is above the 100 day moving average and has just crossed its 25 day moving average.

To do this we will be using only the Daily Stock Price and Indicators database, however with Financial QUEST it is possible to mix databases, for instance downloading income statement data while screening for stock prices.

1. Start Financial QUEST and select the 'Daily Stock Price and Indicators' database. Click Next Step and proceed to the Target Selection Screen.
2. In the Target Screen along the top of the window there are 4 buttons marked "Group/Code", "Set operation", "Target Search" and "Screening & Sort." Click "Screening and Sort." and then click the "Start Screening" button. This will open the screening window.
3. To conduct screening, you start with the Target (Companies you want to search in) >> Condition (the search criteria to apply to the target companies) >> Date Period (the date that the condition is applied)
4. For this example we are looking at all listed companies. To set this as the Target, click the Target button and then select All Listed Companies from the Group selection window. Click Determine and in the Target textbox, the code "LISTED" will appear.
5. To select the conditions, open the "Daily Indicators - Individual Stocks (Consolidated Basis)" file and select the Ratio of Divergence from 25 day moving average item. When the item is clicked, the item moves to the add item textbox and from here the conditions can be entered. As we are screening stocks that have crossed this line today, we want this item to be greater than 0. Type this into the textbox after the item code as shown below.
6. Using the logic buttons we can add more conditions to be screened. As we are looking for stocks that have crossed the line today, this item must have been less than 0 yesterday. To enter the logic for this, click "and" and then click the same item again so that it appears in the textbox. Then add "[-1]" at the end of the stock item to return the value for yesterday. Enter less than 0 as the search condition.
7. As the final condition, click "and" and find the item Ratio of Divergence from the 100 day moving average. Click the item and set the search condition as greater than 0.



8. Enter the date to apply the screening in the "Term" textbox in the Japanese format YYYYMMDD.
9. Click run screening. After the program has run and returned the stocks that fall into the criteria, click Download List, and then click Adopt all to select all companies as the target. Close the screening window and you have completed the data screening process in Financial QUEST!

Data screening can be used in a wide variety of applications and is not only for screening stocks, you can sort companies based on net assets, profitability, shareholders equity etc. For more information about Financial QUEST or to request a demonstration or free trial, please contact a Nikkei Representative at e-needs@eur.nikkei.com.

